



DATASHEET - DELTA SUITE AERO

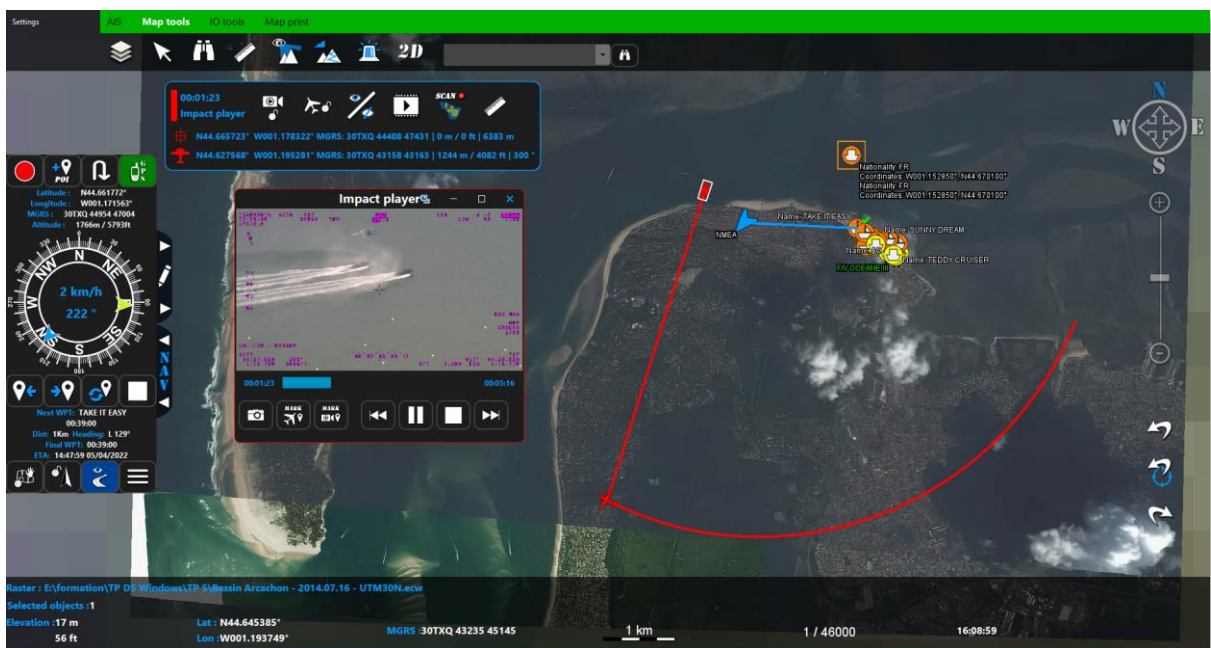
Overview

The AERO version is the "C4ISR" declination of the DELTA SUITE. It is used in operation by the French Special Operations Command since 2015.

This is the version dedicated to the control of optronic systems installed on aircraft. In addition to the standard functionalities common to the other versions, the DELTA SUITE AERO offers a set of advanced tools to optimize the use of ISR sensors (augmented video, scanning mode, SLEW tool, etc.).

In terms of communications, the exchange of data between different stations equipped with the DELTA SUITE is possible if they are connected through one of the many compatible communication means (LOS, BLOS, SATCOM, LTAC, MESH, MIMO).

DELTA SUITE allows increased interoperability with third-party systems, through compliance with military and civilian standards and protocols (VMF through IDM modems, CoT, FFI/MTF, MAVLINK, STANAG 4609, REST API, POP, SMTP and soon NMEA2000, STANAG 4586, STANAG 7023).



Basic functions

In order to allow a quick synthesis of the most important information, the user has a permanent access on the main display, and the hereafter functions and information:

- Display of coordinates (MGRS, long/lat...);
- Altitude and elevation (meter and feet);
- Graphical scale (metric/imperial);
- Local / Universal time;
- Basic and advanced search tool;
- Map interaction tools;
- 2D / 3D view toggle;
- Azimuth and distance measurement tool;
- Geofencing tool;
- Monitoring tool.

Non contractual document

IMPACT : Société par Actions Simplifiée Unipersonnelle au capital de 15 000€

Inscrit au R.C.S. Orléans - N° SIRET : 752 383 075 00039 - TVA Intracom : FR 74752383075 – Code NAF 5829C

Siège social : 1 avenue du Champ de Mars, CS 30019, 45074 Orléans Cedex 2 contact@sas-impact.fr



DATASHEET – DELTA SUITE AERO

Mapping: data integration and terrain analysis

- 🌐 Drag and drop import capabilities of several geographic data formats: GeoTIFF, JPEG 2000, ECW, DTED/DMED, Shapefile, KML/KMZ, NITF, S57, USRP, ASRP, Mr Sid;
- 🌐 Drawing of vector objects;
- 🌐 Slope profiles calculation;
- 🌐 Line of sight calculations in 2D or 3D, linked to moving objects.

Moving Map tool

It is a tool dedicated to the operation of cameras (STANAG 4609, Wescam MX Series compatible equipment). It offers many features:

- 🌐 Display of the target information, the aircraft or helicopter position, the sensor footprint and the line of sight;
- 🌐 Transmission to the camera of the altimetric data of the observed area;
- 🌐 Camera control (sensor choice, SLEW command, etc.) ;
- 🌐 Display vector information in overlay directly in the Player (augmented video function);
- 🌐 Replacement of the "hand controller" by another device (e.g. video game controller);
- 🌐 Report observations / draw directly in the Player;
- 🌐 Visualization of previously observed areas (scanning mode);
- 🌐 Mission Replay;
- 🌐 Capture video and annotate it in the DELTA SUITE's integrated drawing tool.

The DELTA SUITE is also able to manage the encoders proposed by the VODEA company (FOCUS series).



Options

Optional modules can be added to extend the functionalities offered by the DELTA SUITE:

- 🌐 Instant messaging tool, point to point or in server mode (XMPP);
- 🌐 Integration of MAGELLIUM's algorithms to automatically adjust the video on reference images (under conditions) and to ensure automatic detection and tracking of moving targets (under conditions).